

Contents

The Quick Guide is not intended as a substitute for your *Owner's Manual*. We strongly encourage you to review the *Owner's Manual* and supplementary manuals so you will have a better understanding of your vehicle's capabilities and limitations.

Overview ●

Topic 1

Entering and Exiting

- Keys ▶ P.7
- Smart Access System with Push-button Start ▶ P.8
- Theft Deterrent System ▶ P.9



Topic 2

Before Driving

- Seats (Manual) ▶ P.11
- Seats (Power) ▶ P.12
- Driving and Seat Position Memory System ▶ P.13
- Head Restraints ▶ P.14
- Seatbelts ▶ P.14
- Outside Rear View Mirrors ▶ P.14
- Anti-glare Inside Rear View Mirror ▶ P.15
- Steering Wheel ▶ P.15

Topic 3

When Driving

- Starting ▶ P.17
- Automatic Transmission ▶ P.18
- Manual Transmission ▶ P.19
- Parking Brake ▶ P.19
- Multi-information Display ▶ P.20
- Satellite Switches ▶ P.21
- Turn Signal Lever ▶ P.22
- Emergency Flasher Switch ▶ P.22
- ECT Switch ▶ P.22



- ETCS Switch ▶ P.23
- Intuitive Parking Assist ▶ P.23
- Cruise Control ▶ P.24
- Dynamic Radar Cruise Control ▶ P.25



Topic 4

Rain and Night Driving

- Headlights ▶ P.27
- Fog Lights ▶ P.28
- Windshield Wipers and Washer ▶ P.28
- Headlight Cleaner ▶ P.29
- Rear Window and Outside Rear View Mirror Defoggers ▶ P.29
- Instrument Panel Light Control ▶ P.29

Topic 5

Driving Comfort

- Audio System ▶ P.31
- Air Conditioning System ▶ P.34
- Garage Door Opener ▶ P.35
- Ashtrays ▶ P.37
- Seat Heaters/Seat Heaters and Ventilators ▶ P.37
- Console Boxes ▶ P.38
- Glove Box ▶ P.39
- Cup Holders ▶ P.39



- Interior Lights ▶ P.40
- Rear Sunshade ▶ P.40
- Compass ▶ P.40
- Trunk Storage Extension ▶ P.41
- Luggage Mat ▶ P.41

Topic 6

Opening and Closing

- Door Locks ▶ P.43
- Power Windows ▶ P.44
- Moon Roof ▶ P.44
- Fuel Tank Cap ▶ P.45
- Hood ▶ P.45
- Trunk ▶ P.46



What to do if...

Responding to warning/indicator lights and other problems that may arise.

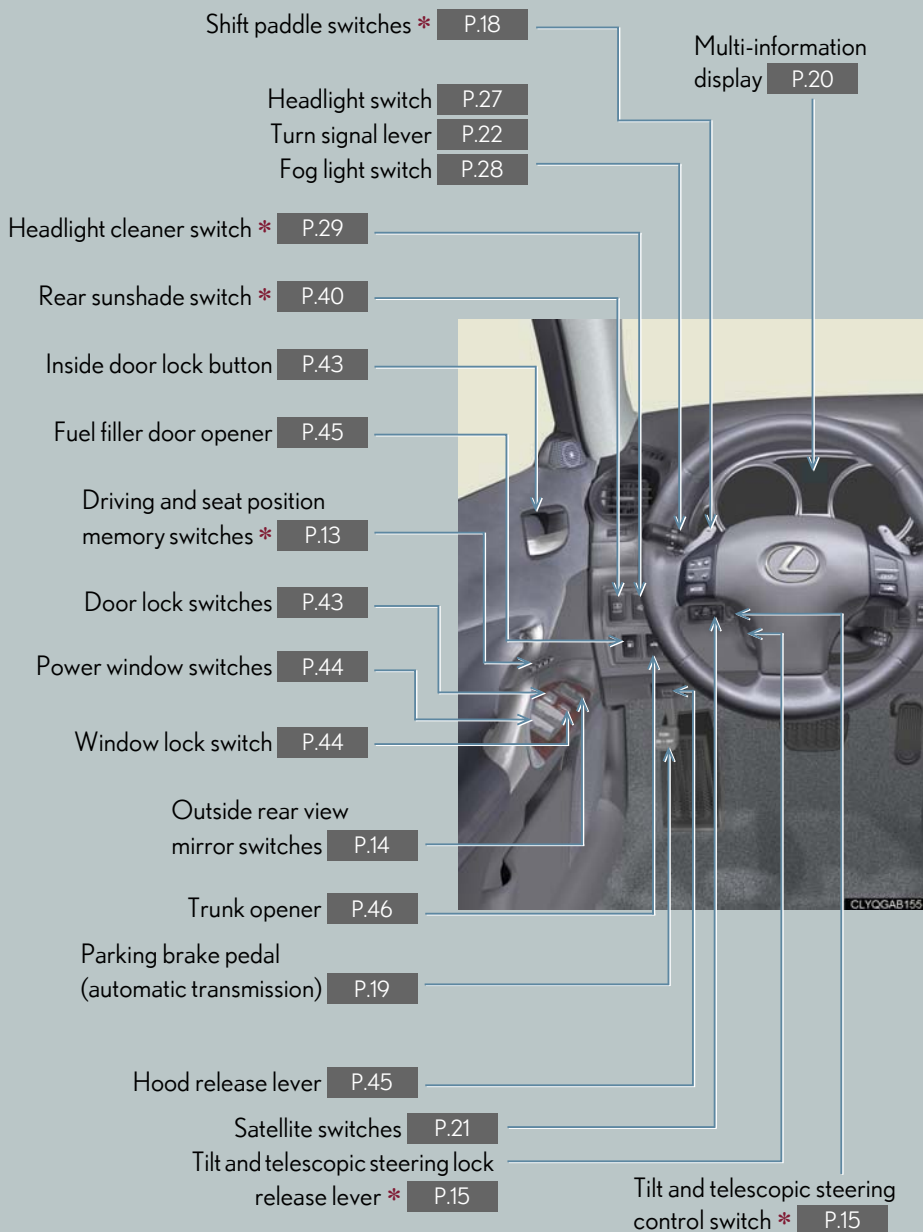
Customizing Your Lexus

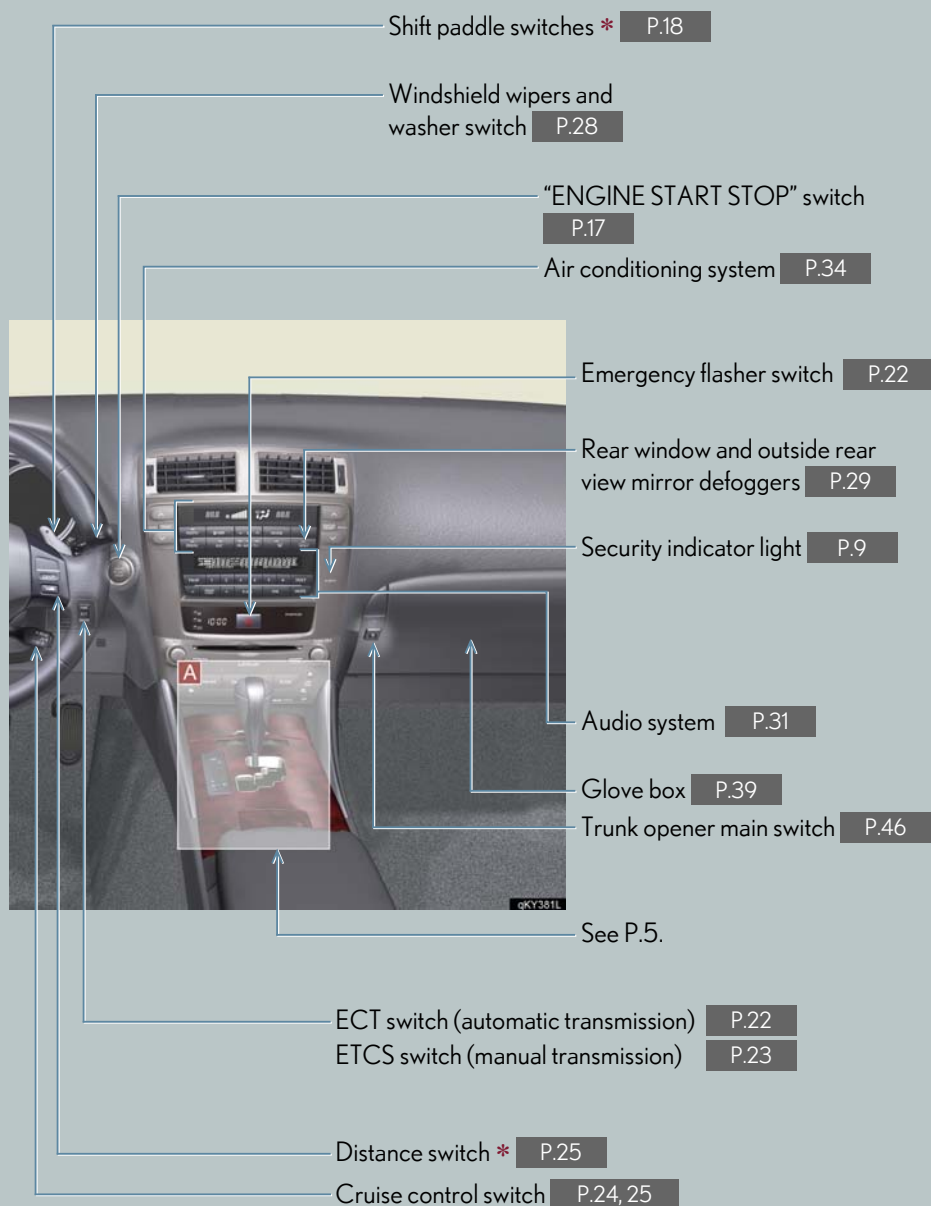
A list of features that can be customized.

Depending on specifications, the vehicle shown in the illustration may differ from your vehicle in terms of color and equipment.

Overview

Instrument Panel



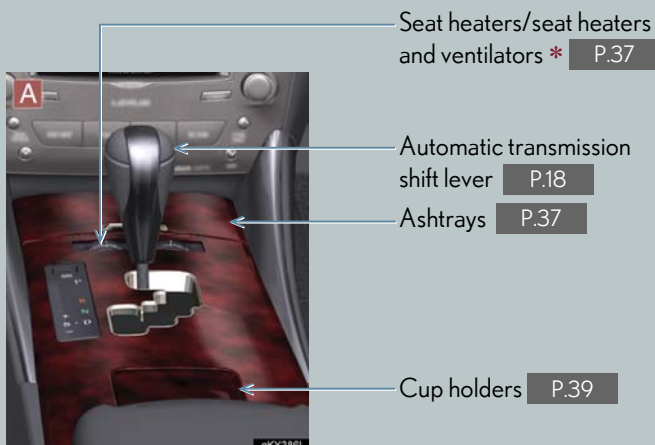


* : If equipped

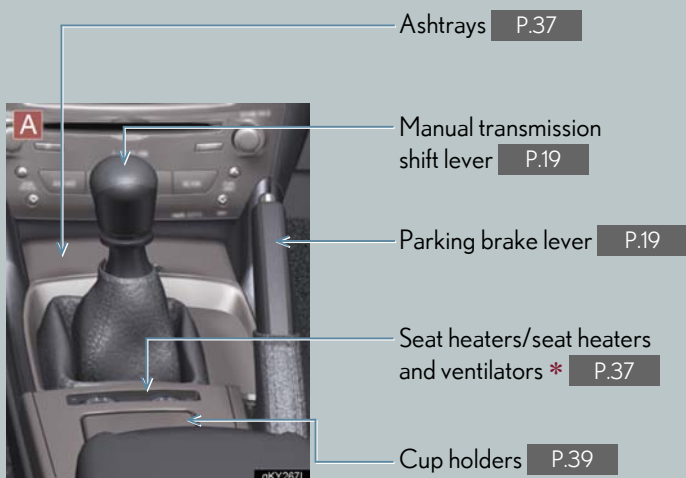
Overview

Instrument Panel

► Automatic transmission



► Manual transmission



* : If equipped



Topic 1

Entering and Exiting

Keys	7
Smart Access System with Push-button Start	8
Theft Deterrent System.....	9

Keys

Electronic key



Smart access system with push-button start
(→P.8, 17)

Mechanical key



- Locks and unlocks the doors
- Opens the trunk
- Locks and unlocks the glove box

The mechanical key is stored inside the electronic key. To extract the key, release the latch and pull.

Wireless remote control



- 1 Press:** locks all doors
- 2 Press once:** unlocks the driver's door
Press twice: unlocks all doors
Press and hold: opens the windows and moon roof
- 3 Press and hold:** opens the trunk
- 4 Press and hold:** sounds the alarm
(Use the alarm to attract attention to the vehicle in order to help deter break-ins. To stop the alarm, press any button on the wireless remote control.)

Smart Access System with Push-button Start

The smart access system with push-button start allows you to enter and exit the vehicle or start the engine by simply carrying the electronic key in your pocket or bag. For details on starting the engine, see page 17.

■ Entering the vehicle



To unlock the vehicle, simply grasp either of the front door handles.

■ Exiting the vehicle



To lock the vehicle, press the lock button on either of the front door handles.

■ Opening the trunk



To open the trunk, press and hold the trunk release button.

For details on what to do when the electronic key does not operate properly, see page 50.

Theft Deterrent System

The theft deterrent system includes the following features to help protect your vehicle from theft.

Engine immobilizer system



The engine immobilizer system prevents the engine from being started in the event that an attempt is made to start the vehicle using an unregistered key.

The security indicator light flashes to indicate that the system is set.

Alarm

The system sounds the alarm and flashes lights when forcible entry is detected.

To set the alarm: lock all the doors from outside the vehicle. The security indicator light comes on to indicate that the alarm is in its preparation state. When the indicator light begins to flash, the system is armed.

To deactivate or stop the alarm: turn the "ENGINE START STOP" switch to ACCESSORY or IGNITION ON mode, or unlock the doors or trunk using the electronic key or the wireless remote control.

Steering lock



The steering wheel locks when the "ENGINE START STOP" switch is in OFF.



Topic 2

Before Driving

Seats (Manual)	11
Seats (Power).....	12
Driving and Seat Position	
Memory System	13
Head Restraints	14
Seatbelts.....	14
Outside Rear View Mirrors	14
Anti-glare Inside Rear View Mirror.....	15
Steering Wheel	15

Seats (Manual)

■ Adjusting seat position



With the lever raised, slide the seat forward or backward.

■ Adjusting seatback angle



With the lever raised, tilt the seatback forward or backward.

■ Adjusting seat height



- 1** Raises the seat
- 2** Lowers the seat

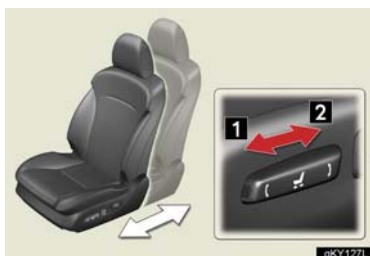
■ Adjusting the front of the seat cushion



- 1** Raises the front of the seat cushion
- 2** Lowers the front of the seat cushion

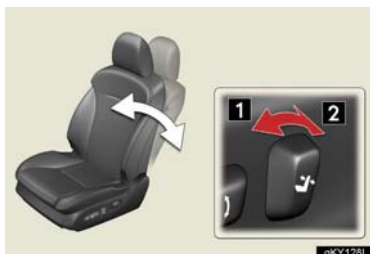
Seats (Power)

■ Adjusting seat position



- 1 Moves the seat forward
- 2 Moves the seat backward

■ Adjusting seatback angle



- 1 Tilts the seatback forward
- 2 Reclines the seatback

■ Adjusting the seat cushion



- 1 Raises and lowers the front of the cushion
- 2 Raises and lowers the entire seat

■ Adjusting the lumbar support



- 1 Firmer
- 2 Softer

Driving and Seat Position Memory System (If Equipped)

The seats can be returned to a previously set position by simply pressing a button.

The position of the steering wheel and the outside rear view mirrors is adjusted along with the driver's seat.

Positions can be conveniently recorded for the vehicle's primary drivers and passengers.

Setting memory positions



While holding down the SET button, press and hold one of the memory buttons (1, 2, or 3) until you hear a beep.

The current position of the seat, as well as the position of the steering wheel and the outside rear view mirrors (for the driver's seat only) is recorded.


Recalling memory positions



Press one of the memory buttons (1, 2, or 3).

Linking driving position memory with door unlock operation (driver's seat only)



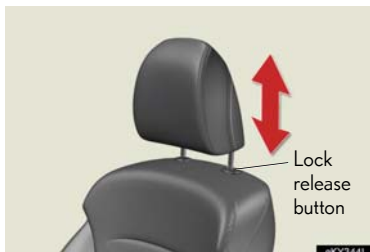
While holding down the desired memory button, press and hold the  button on the wireless remote control until you hear a beep.

To prevent triggering of the alarm, open one of the doors within 30 seconds after the beep is heard.

Linking driving position memory to the door unlock operation allows the memory position to be recalled automatically when the driver's door is opened. (The linked function does not operate if the driver's door is unlocked using the mechanical key or manually from inside the vehicle.)

Head Restraints

Vertical adjustment



To raise: push the head restraint upward.

To lower: push the head restraint down while pressing the lock release button.

Seatbelts

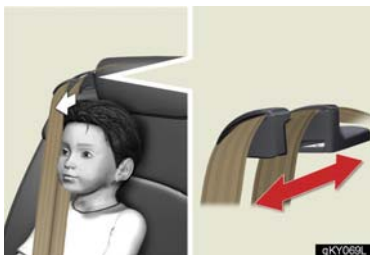
Adjusting shoulder belt height (front seats only)



To raise: pull the anchor upward.

To lower: depress the button and push the anchor down.

Seatbelt comfort guides (outside rear seats only)



If the shoulder belt sits close to the neck, slide the comfort guide forward.

Outside Rear View Mirrors



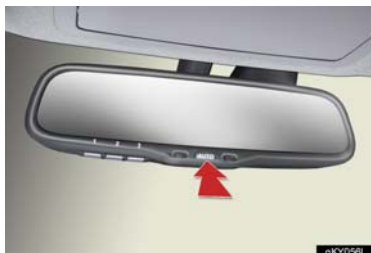
1 To select the mirror you wish to adjust (L or R), use the master switch.

2 To adjust mirror angle, use the control switch.

On some models, the mirrors will automatically angle downwards when the vehicle is reversing. To disable this function, set the master switch in the neutral position (between L and R).

Anti-glare Inside Rear View Mirror

The anti-glare mirror uses a sensor to detect light from vehicles behind and automatically reduces glare.



To turn AUTO mode ON/OFF, press the AUTO button.

The indicator comes on when AUTO mode is turned ON.

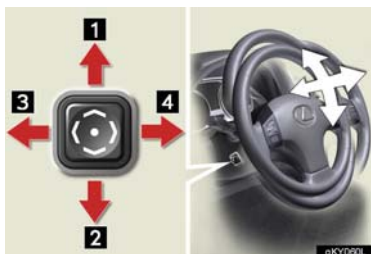
Steering Wheel

Manually adjustable type



To adjust the steering wheel, press the lever down and move the steering wheel to the desired position. Lock the steering wheel in place by pulling the lever up.

Power-adjustable type



- 1 Up
- 2 Down
- 3 Away from the driver
- 4 Toward the driver

The power-adjustable type steering wheel retracts automatically when the "ENGINE START STOP" switch is turned OFF to allow for easy exit and entry. The steering wheel returns automatically to its previously set position when the "ENGINE START STOP" switch is switched to ACCESSORY or IGNITION ON mode.



Topic 3

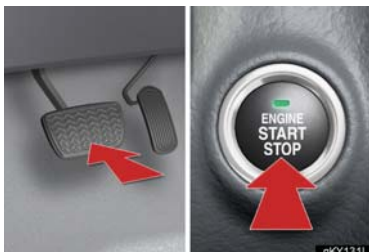
When Driving

Starting	17
Automatic Transmission.....	18
Manual Transmission.....	19
Parking Brake.....	19
Multi-information Display.....	20
Satellite Switches	21
Turn Signal Lever.....	22
Emergency Flasher Switch.....	22
ECT Switch	22
ETCS Switch	23
Intuitive Parking Assist	23
Cruise Control	24
Dynamic Radar Cruise Control.....	25

Starting

With the electronic key on your person, the engine can be started by simply pressing the “ENGINE START STOP” switch, while depressing the brake pedal or clutch pedal. (The mechanical key cannot be used to start the engine.)

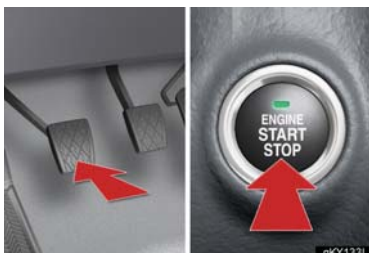
Starting the engine



► Automatic transmission

Make sure the parking brake is engaged and the shift lever is in P.

- 1 Depress the brake pedal.
The “ENGINE START STOP” switch indicator light turns green.
- 2 Press the “ENGINE START STOP” switch.



► Manual transmission

Make sure the parking brake is engaged and the shift lever is in N.

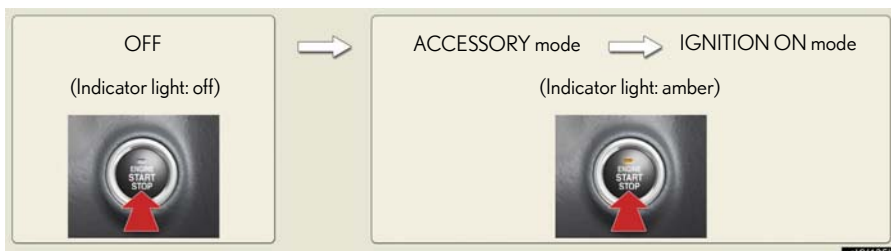
- 1 Depress the clutch pedal.
The “ENGINE START STOP” switch indicator light turns green.
- 2 Press the “ENGINE START STOP” switch.

Stopping the engine

- 1 Engage the parking brake and shift the shift lever to P (for automatic transmission) or N (for manual transmission).
- 2 Press the “ENGINE START STOP” switch.

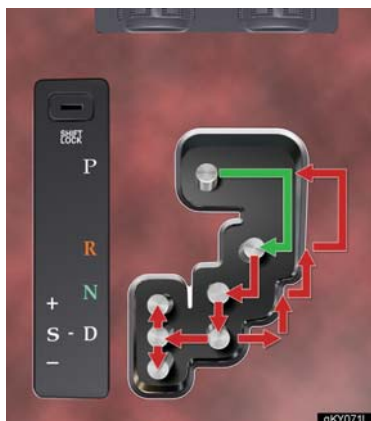
Changing power modes

To change power modes without turning on the engine, press the “ENGINE START STOP” switch without depressing the brake pedal (for automatic transmission) or the clutch pedal (for manual transmission). The modes can be changed in the following order:



Automatic Transmission

Shift positions



- P Park
- R Reverse
- N Neutral (drive not engaged)
- D Drive
- S S mode

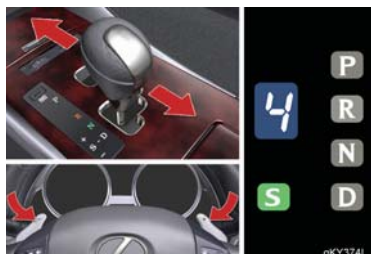
← The vehicle can only be shifted out of P when the "ENGINE START STOP" switch is in IGNITION ON mode and the brake pedal is depressed.

S mode

S mode allows the driver to select the shift range manually based on driving conditions.



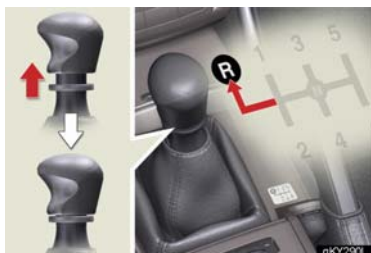
- 1 Shift the shift lever to S.



- 2 To upshift: shift the shift lever toward "+", or pull the "+" shift paddle switch on the steering wheel toward the driver.
To downshift: shift the shift lever toward "-", or pull the "-" shift paddle switch on the steering wheel toward the driver.

The selected shift range is displayed on the instrument cluster.

Manual Transmission



To operate the shift lever, the clutch pedal must be fully depressed.

To shift into R, the ring on the shift lever must be pulled up.

Parking Brake

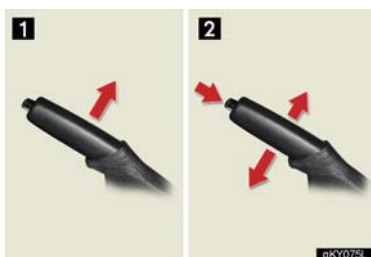
Automatic transmission



To set the parking brake: firmly depress the parking brake pedal.

To release the parking brake: depress the parking brake pedal again.

Manual transmission



1 To set the parking brake: pull the parking brake lever firmly upward.

2 To release the parking brake: press and hold the lock release button and lift the lever slightly before lowering it as far as it will go.

Multi-information Display

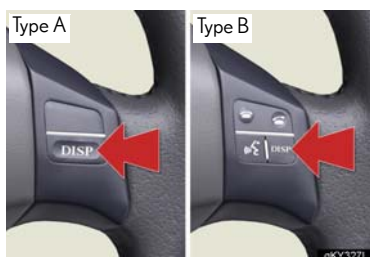
The multi-information display shows information about your vehicle, including the items shown below.

Display information



- Trip information
 - Outside temperature
 - Driving range
 - Average fuel consumption
 - Average fuel consumption after refueling
 - Current fuel consumption
 - Average vehicle speed
 - Gear position (automatic transmission only)
- Satellite switch mode
- Dynamic radar cruise control settings (if equipped)
- Intuitive parking assist information (if equipped)
- Warning messages

Changing the display of trip information



Trip information items can be switched by pressing the DISP switch.

- When using intuitive parking assist or dynamic radar cruise control, the appropriate display is shown on the screen.
- In the event that a problem is detected in any of the vehicle's systems, a warning message is shown on the multi-information display.

Satellite Switches

The satellite switches can be used to change the settings of various functions. Settings are shown on the multi-information display.



The satellite switches can be used to change the settings of the following items.

- Intuitive parking assist (if equipped)
- Tire inflation pressure warning system initialization
- ID code selection for tire inflation pressure warning system
- AFS (Adaptive Front-lighting System) (if equipped)
- Speed indicator
- Tacho indicator

Changing the ON/OFF settings



1 To cycle through the functions, press either the left or right selector switch.



2 To change the settings, press the ON/OFF button.

For detailed information of changing the settings, see the Owner's Manual.

Turn Signal Lever



- 1 Right turn signal
- 2 Left turn signal

To signal a lane change, move the lever partway and hold.

Emergency Flasher Switch



Engaging the emergency flasher switch causes all the turn signal lights to flash. The emergency flashers can be operated even when the "ENGINE START STOP" switch is OFF.

ECT Switch (Automatic Transmission)

Use the ECT switch to select the driving mode that best suits the driving and road conditions.



- 1 Power mode
For more powerful acceleration and uphill driving.
- 2 Normal mode
- 3 Snow mode
For starting or accelerating on snow-covered roads or other slippery surfaces.

An indicator comes on when in power or snow mode.

Entering and Exiting

Before Driving

When Driving

Rain and Night Driving

Driving Comfort

Opening and Closing

What to do if ...

Customizing Your Lexus

ETCS Switch (Manual Transmission)

Use the ETCS switch to change to snow mode when starting or accelerating on snow-covered roads or other slippery surfaces.



An indicator comes on when in snow mode. Press again to return to normal mode.

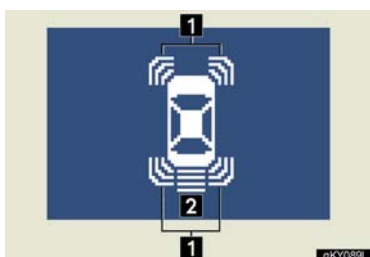
Intuitive Parking Assist (If Equipped)

The system uses a screen display and buzzer to inform the driver of obstacles near the vehicle when parking or driving at low speed.

Turning the system on and off

The system can be turned on and off using the satellite switch. (→P.21)

Screen display



Sensors are used to detect obstacles near the vehicle. The distance to a detected obstacle is shown by the number of indicator bars.

- 1 Indicates obstacles detected by the corner sensors
- 2 Indicates obstacles detected by the back sensors

Cruise Control (If Equipped)

Cruise control allows the driver to maintain a constant speed without having to operate the accelerator pedal.

Use for highway driving or when traveling at a constant speed for long periods of time.

Setting the speed



- 1 Press the ON-OFF button.
The system will turn on.
- 2 Accelerate or decelerate to the desired speed, and then push the lever down.
This sets the speed in the cruise control memory.

Canceling



- 1 To temporarily cancel the cruise control, pull the lever toward you. To resume the cruise control, push the lever up.
- 2 To turn the system off, press the ON-OFF button.

Adjusting the speed setting



- To increase speed:** push the lever up.
To decrease speed: push the lever down.

Release the lever when the desired speed is reached.

Dynamic Radar Cruise Control (If Equipped)

Dynamic radar cruise control supplements conventional cruise control with a vehicle-to-vehicle distance control mode.

Cruise control display



Cruise control settings are shown on the multi-information display.

- 1 Vehicle ahead indicator
- 2 Vehicle-to-vehicle distance
- 3 Preset speed

Vehicle-to-vehicle distance control mode



- 1 Press the ON-OFF button.
 - 2 Accelerate or decelerate to the desired speed, and then push the lever down.
- Vehicle-to-vehicle distance can be adjusted using the distance switch.

Constant speed control mode



- 1 Press the ON-OFF button.
- 2 Push the lever forward and hold for at least one second.
- 3 Accelerate or decelerate to the desired speed, and then push the lever down.

Canceling



- 1 To temporarily cancel the dynamic radar cruise control, pull the lever toward you. To resume the cruise control, push the lever up.
- 2 To turn the system off, press the ON-OFF button.

Adjusting the speed setting



To increase speed: push the lever up.

To decrease speed: push the lever down.

Release the lever when the desired speed is reached.

The vehicle-to-vehicle distance control mode maintains the preset cruising speed as long as no vehicle is detected ahead.

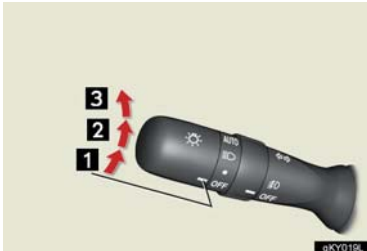


Topic 4

Rain and Night Driving

Headlights.....	27
Fog Lights.....	28
Windshield Wipers and Washer.....	28
Headlight Cleaner.....	29
Rear Window and Outside Rear View	
Mirror Defoggers.....	29
Instrument Panel Light Control.....	29

Headlights



- 1 The instrument panel, side marker, parking, tail and license plate lights turn on.
- 2 The headlights and all lights listed above turn on.
- 3 The headlights and parking lights turn on/off automatically in accordance with ambient light levels.



To engage the high beams, push the lever forward.
To flash the high beams, pull the lever and hold.

■ AFS (Adaptive Front-lighting System) (if equipped)

AFS improves visibility on curves by automatically adjusting the horizontal orientation of the headlights in accordance with vehicle speed and the degree of the tire angle that are controlled by steering input.

The system can be turned on and off using the satellite switch. (→P.21)

Fog Lights



The fog lights can be used only when the headlights (low beam) are on.

Windshield Wipers and Washer

■ Intermittent wiper with interval adjuster (if equipped)



MIST: single wipe

INT: intermittent operation*

LO: low speed

HI: high speed

*: Wiper interval can be adjusted by turning the band.

To spray washer fluid, pull the lever. The wipers will operate automatically.

■ Rain-sensing windshield wipers (if equipped)



MIST: single wipe

AUTO: automatic operation*

LO: low speed

HI: high speed

*: Sensitivity can be adjusted by turning the band.

To spray washer fluid, pull the lever. The wipers will operate automatically.

Headlight Cleaner (If Equipped)



The headlight cleaner can be used only when the "ENGINE START STOP" switch is in IGNITION ON mode and the headlights are on.

Rear Window and Outside Rear View Mirror Defoggers



To defog the rear window and the outside rear view mirrors, press the button.

Press again to cancel.

The system turns off automatically after 15 minutes.

Instrument Panel Light Control



- 1 To dim:** turn the dial counterclockwise.
- 2 To brighten:** turn the dial clockwise.



Topic 5

Driving Comfort

Audio System.....	31
Air Conditioning System.....	34
Garage Door Opener	35
Ashtrays.....	37
Seat Heaters / Seat Heaters and Ventilators	37
Console Boxes.....	38
Glove Box	39
Cup Holders.....	39
Interior Lights.....	40
Rear Sunshade	40
Compass.....	40
Trunk Storage Extension.....	41
Luggage Mat.....	41

Audio System (without navigation system)

Owners of models equipped with a navigation system should refer to the "Navigation System Owner's Manual".

Basic operation



- 1 Sound quality modes
- 2 Listening position (if equipped)
- 3 Automatic Sound Levelizer (ASL)
- 4 Audio sources
- 5 Power/Volume

Audio sources

AM·SAT: AM radio/Satellite Radio*

FM: FM radio

DISC·AUX: CD player/Auxiliary audio device

*: The optional Lexus genuine satellite tuner and antenna allows you to receive and play XM[®] Satellite Radio broadcasts. (Subscription is required. For detailed information, see the Owner's Manual.)

Radio



- 1 Traffic information
- 2 Station presets
- 3 Text messages
- 4 Radio tuner
- 5 RDS genre select
- 6 Scan
 - All radio stations: press
 - Preset radio stations: press and hold
- 7 Seek

Entering station presets

- 1 Select the desired station by using the tune, the seek or the scan function.
- 2 Press and hold one of the preset buttons (1-6) until you hear a beep, indicating that the station is set.

CD player

Playing an audio CD



- 1** Random playback
Current CD: press
All CDs: press and hold
- 2** Repeat
Current track: press
Current CD: press and hold
- 3** Text information
- 4** CD select
- 5** CD load
- 6** Scan
All tracks in current disc: press
First track of each disc: press and hold
- 7** Eject
- 8** Track select/rewind/fast-forward

Playing a CD with MP3/WMA files



- 1** Random playback
Current file: press
All files in current folder: press and hold
- 2** Repeat
Current file: press
All files in current folder: press and hold
- 3** Folder select
- 4** Text information
- 5** File select
- 6** CD select
- 7** CD load
- 8** Scan
All files in current folder: press
First file of each folder: press and hold
- 9** Eject



■ Loading a CD

- 1 Press the LOAD button.
WAIT is shown on the display.
- 2 Insert a CD when the indicators on the slot turn from amber to green.
The display changes from WAIT to LOAD.

■ Loading multiple CDs

- 1 Press and hold the LOAD button until you hear a beep.
WAIT is shown on the display.
- 2 Insert a CD when the indicators on the slot turn from amber to green.
The display changes from WAIT to LOAD.
The indicators on the slot turn to amber when the CD is inserted.
- 3 Insert the next CD when the indicators on the slot turn from amber to green again.
Repeat the procedure for the remaining CDs.
To stop the operation, press the DISC-AUX button.

■ Remote control (steering wheel switches)

The audio system can be operated using the remote control located on the steering wheel.



- 1 Power on/change mode: press
Power off: press and hold
- 2 Volume
- 3 Radio: radio tuner
CD: CD/track/file (MP3/WMA) select

Air Conditioning System (without navigation system)

Owners of models equipped with a navigation system should refer to the "Navigation System Owner's Manual".



- | | |
|-----------------------------------|---|
| 1 Driver side temperature control | 7 Passenger side temperature display |
| 2 Switch to automatic mode | 8 Micro dust and pollen filter |
| 3 Driver side temperature display | 9 Passenger side temperature control |
| 4 OFF button | 10 Windshield defog/defrost |
| 5 Fan speed controls | 11 Outside air/recirculated air mode switch |
| 6 Air flow controls | 12 A/C switch |
| | 13 Dual mode switch |

Using the automatic mode



- 1 Press the AUTO button.
- 2 Adjust the temperature using the TEMP buttons.

Adjusting the temperature in DUAL mode



In DUAL mode, driver and passenger side temperature settings can be adjusted separately.

- 1 Press the DUAL button.
- 2 Adjust the driver side temperature using the TEMP buttons, and the passenger side temperature using the PASSENGER TEMP buttons.

Garage Door Opener

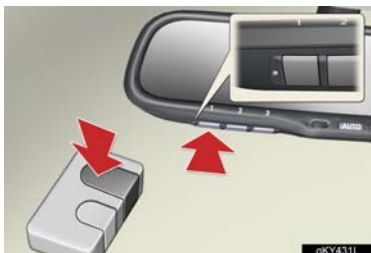
The garage door opener can be programmed to operate garage doors, gates, entry doors, door locks, home lighting systems, security systems, and other devices.

The garage door opener (HomeLink® Universal Transceiver) is manufactured under license from HomeLink®.



The HomeLink® compatible transceiver in your vehicle has 3 buttons which can be programmed to operate 3 different devices.

Programming HomeLink®



- 1 Hold your hand-held transmitter within 3 inches of the HomeLink® buttons.
- 2 Press and hold down the desired HomeLink® button.
- 3 For U.S.A. owners:

While pressing the HomeLink® button, press and hold down the button on the hand-held transmitter until the indicator light changes from a slow to a rapid flash.

For Canadian owners:

While pressing the HomeLink® button, repeatedly press and release (cycle) the button on the hand-held transmitter every 2 seconds until the indicator light changes from a slow to a rapid flash.

If your garage door has the rolling code feature:

- 4 Press the training button on the motor-head unit in your garage.
- 5 Press and release the programmed HomeLink® button twice. The garage door may open.

If the door does not open, press and release the same button once again.

■ Programming other devices

For U.S.A. owners:

To program an entry gate, see the Owner's Manual.

To program other devices, contact your Lexus dealer.

For Canadian owners:

To program all other devices, follow the same procedure as for garage door programming.

■ Operating HomeLink®



Press the appropriate HomeLink® button.
The indicator light should come on.

Entering and Exiting

Before Driving

When Driving

Rain and
Night Driving

Driving Comfort

Opening and Closing

What to do if ...

Customizing
Your Lexus

Ashtrays



► Front

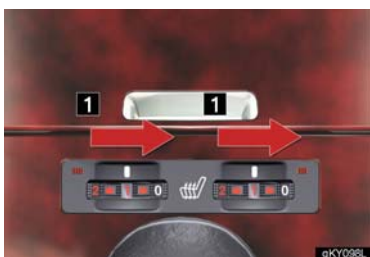
To remove the ashtray, push the release lever.



► Rear

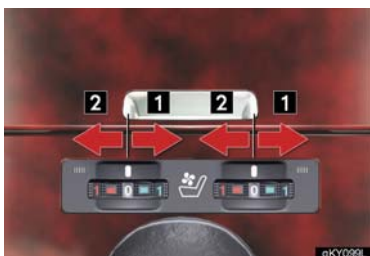
To remove the ashtray, press down on the plate and lift the ashtray out.

Seat Heaters / Seat Heaters and Ventilators (If Equipped)



► Seat heaters

Turn the dial toward **1**.



► Seat heaters and ventilators

Seat heaters: turn the dial toward **1**.

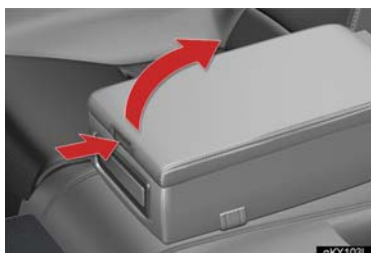
Ventilators: turn the dial toward **2**.

Console Boxes



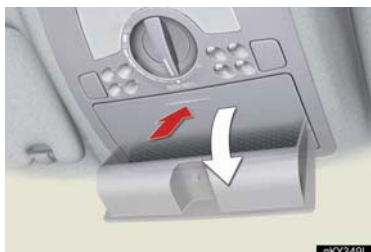
► Front

To open, slide and lift the armrest with the knob pulled up.



► Rear (if equipped)

To open, press the lock release button and lift the armrest.



► Overhead console

To open, press the lid.

There is a power outlet located in the front console box.



Entering and Exiting

Before Driving

When Driving

Rain and Night Driving

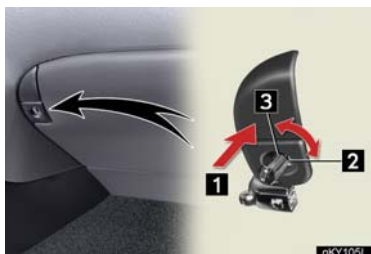
Driving Comfort

Opening and Closing

What to do if ...

Customizing Your Lexus

Glove Box



1 Open: press the button.

2 Lock

3 Unlock

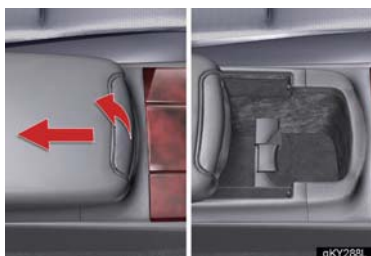
The glove box can be locked and unlocked using the mechanical key.

Cup Holders



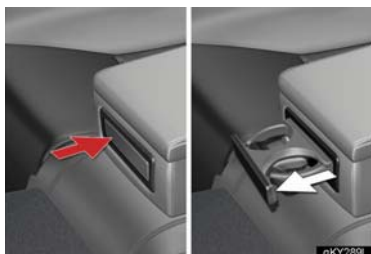
► **Front (type A)**

To open, press down on the front of the lid.



► **Front (type B)**

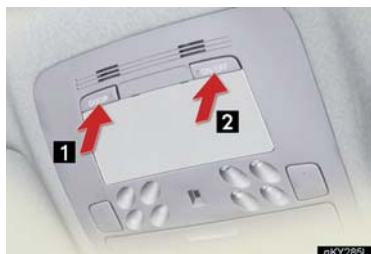
To open, pull and hold the knob and slide the arm-rest.



► **Rear**

To open, press in and release.

Interior Lights



► Without moon roof

- 1 Door position ON/OFF
- 2 ON/OFF



► With moon roof

- 1 Door position ON/OFF
- 2 ON/OFF

Rear Sunshade (If Equipped)



To raise the rear sunshade, press the switch.
Press the switch again to lower it.

The sunshade automatically lowers to ensure visibility when reversing.

Compass



To display the compass, press and hold the AUTO button for 3 or more seconds.

To cancel the display, press and hold the AUTO button again for 3 or more seconds.

Entering and Exiting

Before Driving

When Driving

Rain and
Night Driving

Driving Comfort

Opening and Closing

What to do if ...

Customizing
Your Lexus

Trunk Storage Extension

Longer items can be loaded in the vehicle by utilizing the trunk space and rear seat area.



1 Pull down the rear armrest.



2 Open the inside trunk door from the trunk and load baggage or other items.

Luggage Mat



Pull the lever upwards when lifting the luggage mat up.



The lever can be hooked on the edge of the trunk.



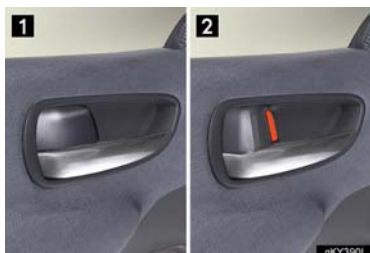
Topic 6

Opening and Closing

Door Locks	43
Power Windows	44
Moon Roof	44
Fuel Tank Cap	45
Hood	45
Trunk	46

Door Locks

■ Locking the vehicle from inside



► Inside lock button

- 1 Locks
- 2 Unlocks



► Door lock switch

Operates all door locks.

- 1 Locks
- 2 Unlocks

■ Locking the vehicle from outside

Using the entry function or wireless remote control (→P.7, 8)

■ Rear door child-protector lock



Setting the switch to the LOCK position prevents the rear doors from being opened from the inside.

Always set the child protector locks when children are seated in the rear seat.

Power Windows



1 Power window switches

To open: press the switch.

To close: pull the switch up.

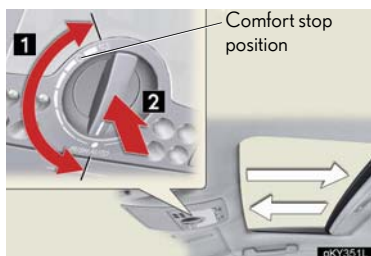
Fully pulling up and releasing the switches causes the windows to close fully. Fully pressing down and releasing the switches causes the windows to open fully.

2 Window lock switch

The window lock switch disables the operation of all windows other than the driver's door window.

Moon Roof (If Equipped)

Opening and closing



1 The moon roof can be opened to 7 different positions by turning the dial clockwise from closed position.

2 To open the moon roof to the comfort stop position, simply press the dial.
Press again to close.

The comfort stop position reduces wind noise.

Tilt up and down



To tilt the moon roof up, turn the dial counter-clockwise from the closed position.

To tilt the moon roof down, turn the dial clockwise.

Fuel Tank Cap



- 1 Press the fuel filler door opener.



- 2 Slowly remove the cap by turning it counter-clockwise.
After the cap is removed, it can be hung on the inside of the fuel filler door.

Hood



- 1 Pull the hood release lever.



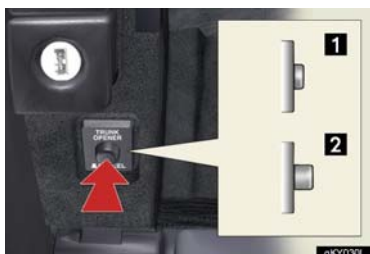
- 2 Insert your fingers under the hood, pull the hood catch and lift the hood.

Trunk

Trunk opener



To open the trunk from inside the cabin, simply press the trunk opener.



To disable the trunk opener, turn OFF the main switch in the glove box.

1 ON

2 OFF

When the trunk opener is disabled, the trunk cannot be opened using the wireless remote control or the entry function.

Entry function and wireless remote control

→P.7, 8

Entering and Exiting

Before Driving

When Driving

Rain and Night Driving

Driving Comfort

Opening and Closing

What to do if ...

Customizing Your Lexus

List of Warning/Indicator Lights



The units used on the speedometer, the tachometer gauge display, indicators and warning lights may differ depending on the model / type.

Stop the vehicle immediately. Continuing to drive the vehicle may be dangerous.

- (U.S.A.)
 (Canada)
Brake system warning light

Stop the vehicle immediately.

-
- Charging system warning light

Have the vehicle inspected immediately.

- (U.S.A.)
 (Canada)
Malfunction indicator lamp

- Electric power steering warning light
 Pre-collision system warning light^{*1}

- SRS warning light
 (U.S.A.)
 (Canada)
ABS warning light

For further information, refer to the Owner's Manual.

Have the malfunction repaired immediately.



Open door warning light



Front passenger's seat belt reminder light



Low fuel level warning light



Tire pressure warning light



Driver's seat belt reminder light



Master warning light

See the Owner's Manual



Turn signal indicator



Cruise control indicator



Headlight high beam indicator



AFS OFF indicator^{*1}



Headlight indicator (U.S.A.)



Front fog light indicator



Tail light indicator (Canada)



Lexus parking assist-sensor indicator^{*1}



ECT SNOW indicator^{*2}



Slip indicator



ETCS SNOW indicator^{*3}



SRS airbag cut-off indicator



ECT PWR indicator^{*2}



VSC OFF indicator^{*1}



Shift position and shift range indicators^{*1}

^{*1}: If equipped

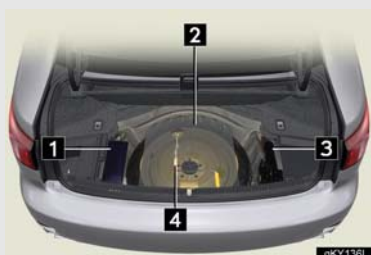
^{*2}: Vehicles with automatic transmission

^{*3}: Vehicles with manual transmission

For further information, refer to the Owner's Manual.

Spare Tire and Tool Compartment

Jack, tools, and spare tire



- 1 Tool bag
- 2 Spare tire
- 3 Jack
- 4 Jack handle

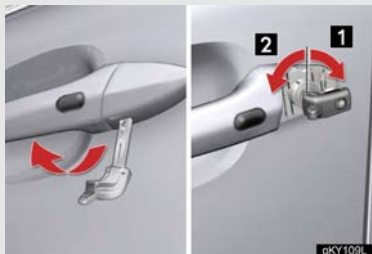
Taking out the spare tire



- 1 Lift up the panel on the trunk floor, and remove the tray.
- 2 Loosen the center fastener and remove the spare tire.

If the electronic key does not operate properly

Unlocking and locking the doors



To unlock or lock the vehicle, use the mechanical key to remove the lock cover on the driver's door handle. The mechanical key is stored inside the electronic key.

- 1 Unlocks
- 2 Locks

Starting the engine

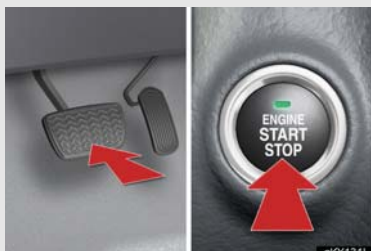


- 1 Depress the brake pedal (for automatic transmission) or clutch pedal (for manual transmission).
- 2 Touch the Lexus emblem side of the electronic key to the "ENGINE START STOP" switch.
- 3 Press the "ENGINE START STOP" switch within 10 seconds of the buzzer, keeping the brake pedal (for automatic transmission) or clutch pedal (for manual transmission) depressed.

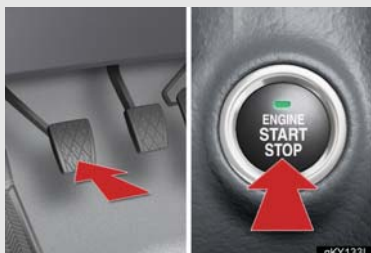
If the electronic key battery becomes depleted, replace it with a new battery. For instructions on replacing the battery, refer to the Owner's Manual. If you need further assistance, contact your Lexus dealer.

If the engine doesn't start

Make sure that the correct operating procedures have been followed.



► Automatic transmission



► Manual transmission



Brake/clutch pedal

Make sure that the brake pedal (for automatic transmission) or clutch pedal (for manual transmission) is firmly depressed when attempting to start the engine. (→P.17)

Steering wheel lock

Make sure that the steering wheel lock is released.

To release the steering wheel lock, gently turn the wheel left or right while pressing the "ENGINE START STOP" switch. (→P.9)

If the engine still does not start, see the Owner's Manual for more information or contact your Lexus dealer.

Electronic Key Alarm

The electronic key alarm uses an alarm and warning messages to indicate that the electronic key has been used improperly. Take appropriate measure in response to any warning messages that are displayed. In some cases, an alarm may sound without an accompanying warning message. If so, follow the correction procedure in the table below.

Alarm	Situation	Correction procedure
Exterior alarm sounds once for 2 seconds	Tried to lock the doors using the entry function while the electronic key is still inside the passenger compartment	Retrieve the electronic key from the passenger compartment and lock the doors again.
	Closed the trunk while the electronic key is still inside and all doors are locked	Retrieve the electronic key from the trunk and close the trunk lid.
Exterior alarm sounds once for 60 seconds	Tried to exit the vehicle with the electronic key and lock the doors without first turning the "ENGINE START STOP" switch OFF	Turn the "ENGINE START STOP" switch OFF and lock the doors again.
Exterior alarm sounds once for 10 seconds	Tried to lock the vehicle using the entry function while a door is open	Close all of the doors and lock the doors again.
Interior alarm sounds continuously*	Tried to open the door and exit the vehicle without shifting the shift lever to P	Shift the shift lever to P.
Interior alarm pings continuously	Switched to ACCESSORY mode while the driver's door is open (Opened the driver's door when the "ENGINE START STOP" switch is in ACCESSORY mode.)	Turn the "ENGINE START STOP" switch OFF and close the driver's door.
	Turned the "ENGINE START STOP" switch OFF while the driver's door is still open	Close the driver's door.

*: Vehicles with automatic transmission only

Customizing Your Lexus

Your vehicle includes a variety of electronic features that can be personalized to your preferences. Programming these preferences requires specialized equipment and may be performed by an authorized Lexus dealership.

Some function settings are changed simultaneously with other functions being customized. Contact your Lexus dealer for further details.

Item	Function	Default setting	Customized setting
Smart access system with push-button start	Smart access system with push-button start	ON	OFF
	Operation signal (Emergency flashers)	ON	OFF
	Operation signal (Buzzer)	ON	OFF
Wireless remote control	Wireless remote control	ON	OFF
	Unlocking operation	Driver's door unlocked in one step, all doors unlocked in two steps	All doors unlocked in one step
	Time elapsed before automatic door lock function is activated if door is not opened after being unlocked	30 seconds	60 seconds
			120 seconds
	Automatic door lock function to be activated if door is not opened after being unlocked	ON	OFF
	Operation signal (Emergency flashers)	ON	OFF
	Operation signal (Buzzer)	ON	OFF
	Trunk unlocking function	ON	OFF
	Trunk unlocking operation	Push and hold	Push twice
			One short push
	Panic function	ON	OFF

Item	Function	Default setting	Customized setting
Door lock	Unlocking using a key	Driver's door unlocked in one step, all doors unlocked in two steps	All doors unlocked in one step
	Speed-detecting automatic door lock function (Manual transmissions)	ON	OFF
	Speed-detecting automatic door lock function (Automatic transmissions)	OFF	ON
	Opening driver's door unlocks all doors (Manual transmissions)	ON	OFF
	Opening driver's door unlocks all doors (Automatic transmissions)	OFF	ON
	Shifting gears to P unlocks all doors.	ON	OFF
	Shifting gears to position other than P locks all doors.	ON	OFF
Power windows	Linked door lock operation	ON	OFF
	Linked door key operation	Open and close	Open only Close only
	Wireless remote control linked operation	ON	OFF
Moon roof	Linked door lock operation	ON	OFF
	Linked door key operation	Open and close	Open only Close only
	Linked operation of components when door key is used	Slide only	Tilt only
	Wireless remote control linked operation	ON	OFF
	Linked operation of components when wireless remote control used	Slide only	Tilt only

Entering and Exiting

Before Driving

When Driving

Rain and Night Driving

Driving Comfort

Opening and Closing

What to do if ...

Customizing Your Lexus

Customizing Your Lexus

Item	Function	Default setting	Customized setting
Automatic light control system	Light sensor sensitivity	Level 3	Level 1 to 5
	Time elapsed before headlights automatically turn off after doors are closed	30 seconds	0 seconds
			60 seconds
			90 seconds
Windshield wipers and washer	Switching operation when the vehicle is stationaly	ON	OFF
	Drip prevention function	ON	OFF
	Time elapsed before the drip prevention function operates	Variable depending on the vehicle speed	3 seconds
Intuitive parking assist	Back sensor operation display and buzzer	ON	OFF
	Buzzer volume	Level 3	Level 1 to 5
	Distance which a sensor detects	4.5 ft. (150 cm)	1.8 ft. (60 cm)
Illumination	Time elapsed before lights turn off	15 seconds	7.5 seconds 30 seconds
	Operation when the doors are unlocked	ON	OFF
	Operation after the “ENGINE START STOP” switch turned OFF	ON	OFF
	Front foot well lighting	ON	OFF
	Shift lever lighting	ON	OFF
	Outer foot light	ON	OFF



Your Lexus dealer

Your Lexus dealer will provide quality maintenance and any other assistance you may require.

If there is not a Lexus dealer near you, please call the following number:

■ U.S. OWNERS

- In the U.S. mainland or Canada:

Lexus Roadside Assistance

1-800-25-LEXUS or **1-800-255-3987** (Toll-Free)

- In Hawaii:

Servco Automotive Roadside Assistance/Customer Services

1-800-25-LEXUS or **1-800-255-3987** (Toll-Free)

■ CANADIAN OWNERS

- In Canada or the U.S. mainland:

Lexus Roadside Assistance/Customer Service

1-800-26-LEXUS or **1-800-265-3987** (Toll-Free)

Please access our **websites** for further information.

- The U.S. mainland: www.lexus.com

- Hawaii: www.servcolexus.com

- Canada : www.lexus.ca

©2007 TOYOTA MOTOR CORPORATION

All rights reserved. This material may not be reproduced or copied, in whole or in part, without the written permission of Toyota Motor Corporation.