



VOLVO S60

QUICK GUIDE



WELCOME TO THE GLOBAL FAMILY OF VOLVO OWNERS!

Getting to know your new vehicle is an exciting experience.

This Quick Guide provides a brief overview of the most common features and functions in your Volvo.

However, for the most up-to-date and detailed descriptions and instructions, as well as important warnings and other information not included in this folder, please refer to your Owner's Manual.

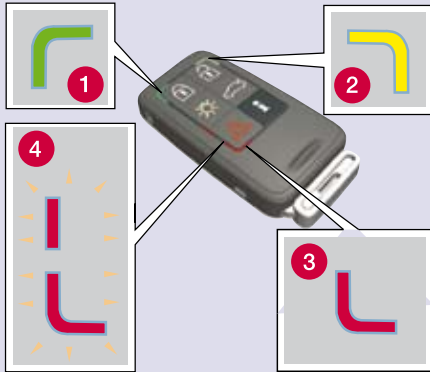
An asterisk (*) indicates optional equipment.

For additional information, contact Customer Service:

U.S.A.: 1-800-458-1552 www.volvocars.us

Canada: 1-800-663-8255 www.volvocanada.com

REMOTE KEY WITH PCC* – PERSONAL CAR COMMUNICATOR



PCC*

- 1 Green light: vehicle is locked.
- 2 Yellow light: vehicle is unlocked.
- 3 Red light: alarm has been triggered.
- 4 Alternately flashing red lights: the alarm was triggered less than 5 minutes ago.



Locks the doors and trunk and arms the alarm^A.



Unlocks the doors and trunk, and disarms the alarm^B.



Trunk (press once to unlock; press twice to open trunk slightly).



Approach lighting illuminates lights in door mirrors, cabin, footwells, license plates. Turn signals and parking lights illuminate.



“Panic” alarm.
– Press and hold to sound the alarm. Turn off alarm with unlock button.



Information about the vehicle can be gathered within a range of 300 ft. (100 m).

– Press the button and wait for 7 seconds.

If the vehicle is out of range when the button is pressed, the most recently stored status information will be shown.

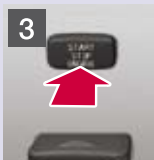
^A The accessory inclination and movement alarm sensors can be turned off. See the “Alarm” section of your owner’s manual for information.

^B Automatic relock occurs if no door/trunk is opened within 2 minutes after unlock.

STARTING THE ENGINE



– Holding the end of the remote key with the base of the key blade, insert the remote key into the ignition slot and press it in as far as possible.



– Press the **START/STOP/ENGINE** button briefly to start the engine.



– Depress the brake pedal.

COLDSTART



NOTE

After cold starts, your engine will idle at a higher speed for a short time.

SWITCHING OFF THE ENGINE AND REMOVING THE REMOTE KEY



1. Park the vehicle and press the **START/STOP ENGINE** button to switch off the engine.
2. Pull the remote key out of the ignition slot.

BLIND SPOT INFORMATION SYSTEM (BLIS)*



If the BLIS indicator lights illuminate even when there are no vehicles in the blind area, this may be due to light reflected from a wet road surface, the vehicle's own shadow against a large, light, smooth surface, or sunlight directly in the camera when the sun is low on the horizon.

If there is a fault with the system, **Blind spot syst. Service required** will be displayed.

IGNITION MODES 0 AND I



To access the following ignition modes: The brake pedal must **not** be depressed.

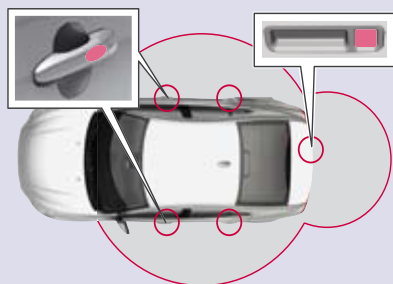


Modes Active functions

- Remote key not fully pressed into slot: infotainment system and cabin lighting.
- 0 Remote key fully pressed into slot: Instrument panel/clock lighting, steering wheel lock off.
- I Remote key fully pressed into slot and a short press on **START/STOP ENGINE**: moonroof*, power windows, blower, ECC, wipers, 12-volt sockets, navigation system*.

To exit modes **0/I** and turn off the electrical system: Pull the remote key out of the ignition slot.

KEYLESS DRIVE*



On keyless drive vehicles, it is only necessary to have a remote key in your possession to operate the central locking system and start the engine.

LOCKING AND ARMING THE ALARM

– Press the pressure-sensitive area on any of the outside door handles or the rubber-covered button to the right of the trunk opening button. The lock indicator light on the dashboard will start to flash.

UNLOCKING AND DISARMING THE ALARM

– Pull a door handle to unlock and open the door or press lightly on the larger of the two rubberized buttons on the trunk lid.

STARTING THE ENGINE

– With a remote key in the passenger's compartment, depress the brake pedal.
– Press and release the **START/STOP ENGINE** button. The autostart function will operate the starter motor until the engine starts.

SWITCHING OFF THE ENGINE

– Press briefly on the **START/STOP ENGINE** button.

WINDSHIELD WIPERS AND RAIN SENSOR*



- 1 Rain sensor **On/Off** with the lever in the **0** position.
- 2 Turn to adjust intermittent wiper speed or rain sensor sensitivity where applicable.

A	Single wiper sweep.
0	Off
B	Intermittent wipers. Turn (2) to adjust.
C	Normal wiper speed.
D	High wiper speed.
E	Windshield/headlight washers.
	Displayed when the rain sensor is active.

INFOTAINMENT SYSTEM



- 1 Turn to adjust volume.
- 2 Press for ON/OFF.
- 3 Press to choose **AM**, **FM1**, **FM2**, **SIRIUS1***, **SIRIUS2***.
- 4 Press to choose **DISC**, **iPod®***, **AUX/ USB ^A**, **Media BT***.
- 8 Press for sound settings such as **Bass**, **Treble** or **Surround*** – Turn **TUNE** (6) to adjust.

RADIO

- 6 Turn to choose a station.
For **FM1/FM2**, an automatically generated list of the strongest stations is displayed.
- 7 Search for stations with the left/right arrow keys.
Store up to 10 stations each for **FM1/FM2/AM** by holding in buttons 0–9 until the stored station is confirmed in the display.

CD/DVD PLAYER

- 5 Press to eject a disc.
- 6 Turn to change CD tracks.
- 7 Change CD tracks with the left/right arrow keys.

AUX AND USB

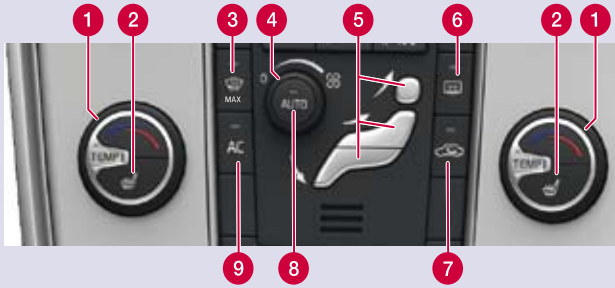
An iPod®B or MP3 player can be connected to the infotainment system through the AUX or USB sockets in the center console. An iPod®-connected through the USB socket will also be charged.

HD RADIO

HD radio reception is subject to coverage limitations. See your Owner's Manual for details.

^B iPod® is a registered trademark of Apple Computer Inc.

^A **AUX/USB** sockets for e.g., mp3 player. Set the device's volume to medium for best sound quality; adjust with **TUNE** (6). An iPod® connected to the USB socket will also be charged.



AUTOMATIC CONTROL

In **AUTO** mode, ECC controls all functions automatically and makes driving more pleasant with optimal air quality.

- 1 Turn the control to the desired temperature on the left/right sides of the cabin. The set temperature is shown in the display.
- 8 Press to automatically control the temperature and other functions.

MANUAL CONTROL

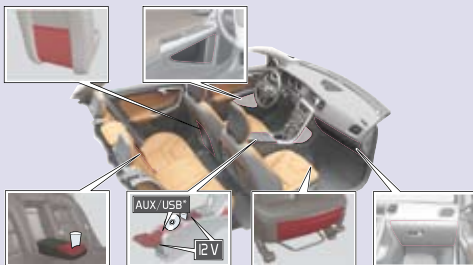
- 2 Heated driver/front passenger seat*.
- 3 Max. defroster. Directs maximum air flow to the windshield and front side windows.
- 4 Blower speed.
- 5 Air distribution.
- 6 Heated rear window and door mirrors.
- 7 Recirculation.
- 9 Air conditioning Off/On to cool the cabin and defog the windows.

STORAGE SPACES, 12-VOLT SOCKETS & AUX/USB CONNECTOR



The 12-volt sockets in the cabin function in ignition modes I or II.

The 12-volt socket* in the trunk always functions.



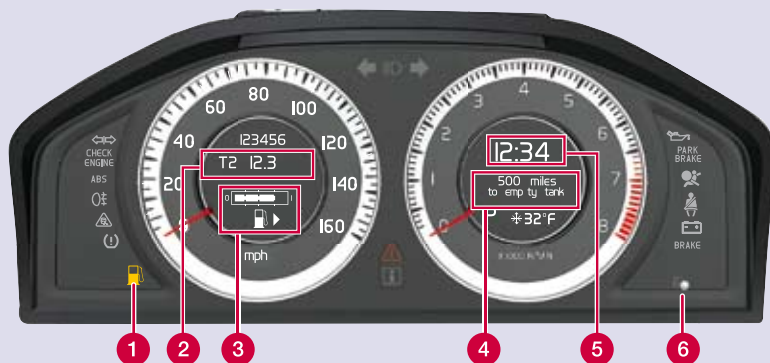
AUX/USB can be used to connect e.g., an mp3 player to the vehicle's infotainment system.



CAUTION

Using the optional 12-volt socket in the trunk with the engine switched off will drain the battery.

ODOMETER AND TRIP COMPUTER



- ❶ Low fuel level indicator
When the symbol illuminates, refuel as soon as possible.
- ❷ The display shows two separate trip odometers, T1 & T2.
- ❸ Fuel gauge
The fuel filler door is on the right, as indicated by the arrow.
- ❹ Trip computer display. Select function with (8).
- ❺ Clock: Adjust with (6).
- ❻ Multi-function control
Turn the control clockwise or counterclockwise to set the clock.
A short press toggles between T1 & T2.
A long press resets the displayed odometer.



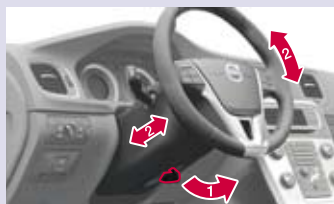
- ❷ Press to display or erase a message.
- ❸ Turn to show trip computer information alternatives.
- ❹ A short press resets the current function. A long press resets all functions.



NOTE

The display text **Miles to empty tank** is an approximation, based on recent average fuel consumption.

STEERING WHEEL ADJUSTMENT



1. Release lock. 2. Adjust.



WARNING

Never adjust the steering wheel while driving.

BLUETOOTH



1. Make the cell phone discoverable/visible.
2. Press the **TEL** button on the center console control panel briefly.
3. Select "Add phone" in the display.
4. Select the cell phone to be connected.
5. Enter the numbers shown in the audio system display using the cell phone's keypad.

LIGHTING PANEL



A High beam flash

B Toggle between high/low beams. Home safe lighting.



Display & instrument panel lighting.



Rear fog light (driver's side only).



Automatic headlights. High beam flash only.



Parking lights



Headlights: turn off when ignition is switched off, high/low beams.



Open the fuel filler door.



Press once to unlock the trunk, press twice to pop open the trunk slightly.

DRIVER SUPPORT SYSTEMS



CITY SAFETY™ AND COLLISION WARNING WITH FULL AUTO-BRAKE*

City Safety™ is a support function intended to help the driver avoid a collision in e.g., stop-and-go traffic where changes in the surrounding traffic coupled with driver distraction could result in an accident.

City Safety™ is active at speeds up to 18 mph (30 km/h) and assists the driver by monitoring the traffic ahead using the laser sensor mounted in the upper section of the windshield.

City Safety™ can help prevent a collision if the difference in speed between your vehicle and the vehicle ahead is less than 9 mph (15 km/h). City Safety™ is designed to intervene as late as possible to help avoid unnecessary activation.



WARNING

The driver is always responsible for keeping a safe distance to the vehicle ahead.

City Safety™ is a supplemental aid to the driver. It can never replace the driver's attention to traffic conditions or his/her responsibility for operating the vehicle in a safe manner.

City Safety™ may never be used instead of the driver applying the brakes.

City Safety™ does not function in all driving situations or in all traffic, weather or road conditions.

City Safety™ and Collision Warning with Full Auto-brake do not function in all traffic, light, weather and road conditions and can only detect pedestrians with clear body contours and who are at least 32 in. (80 cm) tall. Warnings and braking action are switched off above 50 mph (80 km/h).

ADAPTIVE CRUISE CONTROL*

This function should not be used in e.g., stop-and-go traffic, at intersections, on slippery roads, when there is accumulated water or slush on the road, in heavy rain/snow, poor visibility, on winding roads, and when driving on on/off ramps.

See the chapter "Comfort and driving pleasure" in your Owner's Manual for additional information.

EMERGENCY BRAKE ASSIST (EBA)



EBA is designed to provide full brake effect immediately in the event of sudden, hard braking. When EBA is activated, the brake pedal will go down more than usual.

– Press and hold the brake pedal for as long as necessary – there will be no braking effect if the pedal is released.

CAR CARE



Hand washing is gentler on the paint than an automatic car wash. Since the paint on a new vehicle may take several months to harden completely, we recommend washing the vehicle by hand during this period. Use clean water, a suitable car washing detergent and a sponge. Keep in mind that dirt or grit on the sponge can scratch the paint.

ADJUSTING THE FRONT SEAT



- 1 Lumbar support.
- 2 Backrest tilt.
- 3 Raise/lower the seat.
- 4 Raise/lower the front edge of the seat cushion.
- 5 Forward/rearward.
- 6 Folding down the passenger's seat backrest. See the Owner's Manual for more information.

ELECTRIC PARKING BRAKE



Setting

- Press the button. The light flashes until the parking brake is fully applied, then glows continuously.

Releasing

1. Ignition mode **0** or higher.
2. Press the brake pedal and pull out the button.

Release automatically

- Select a gear and begin driving. The parking brake will release automatically (the driver's seat belt must be fastened).